

CAST IRON GLOBE VALVE HIGH TEMPERATURE FLANGED PN16 DIN 3202-1 F1

Cast iron globe valve flanged PN16 for setting or closing on networks of non-corrosives and non-toxic fluids, steam and high temperature.

Graphite packing and gasket.

Bolted bonnet and packing for an easy maintenance.

Certificate

3.1



PED/2014/68/UE
BUREAU VERITAS
Certification



Size : DN15 to DN200

Connection : Flanged PN16 RF

Min Temperature : -10°C

Max Temperature : +300°C

Max Pressure : 16 bars

Specifications : Rising rotating stem and handwheel
High temperature
Bolted bonnet and packing

Materials : Cast iron body EN GJL-250

CAST IRON GLOBE VALVE HIGH TEMPERATURE FLANGED PN16 DIN 3202-1 F1

SPECIFICATIONS :

- Respect the flow direction (indicated by the arrow)
- Rising rotating stem and handwheel
- Pressed seat
- Bolted bonnet and gland packing
- Flanges R.F. PN16
- Grey painting RAL 7011-7012, 50-100µ thickness

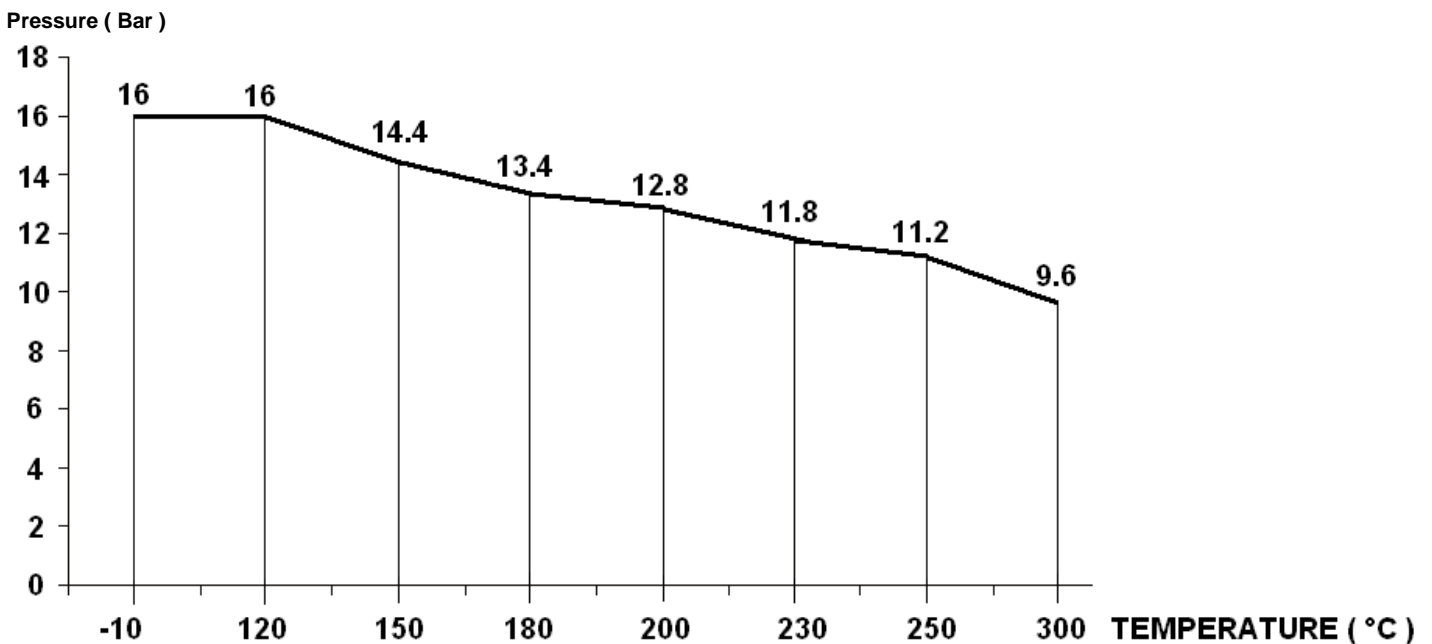
USE :

- For all common fluids of 2nd group
- Min and max Temperature Ts : - 10°C to + 300°C
- Max Pressure Ps : 16 bars (see graph)
- Keep greased the stem
- Do not use for convector fluid
- Tighten the gland packing in service
- **Steam : 10 bars maximum**

FLOW COEFFICIENT Kvs (M3 / h) :

DN	15	20	25	32	40	50	65	80	100	125	150	200
Kvs (m3/h)	5.9	7.4	13	18	30	41	79	115	181	225	364	690

PRESSURE / TEMPERATURE GRAPH :

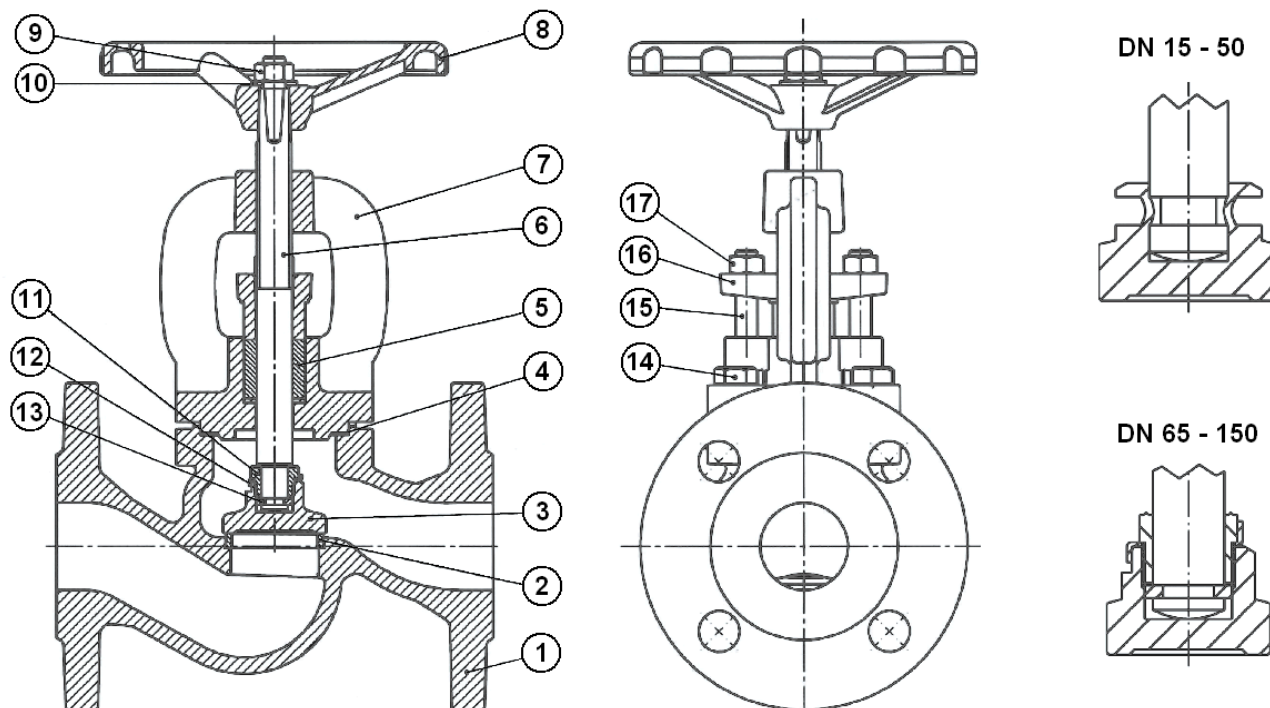


CAST IRON GLOBE VALVE HIGH TEMPERATURE FLANGED PN16 DIN 3202-1 F1

RANGE :

- Globe valve Cast iron flanges R.F. PN16 Ref. 479 DN 15 to DN 200

MATERIALS:

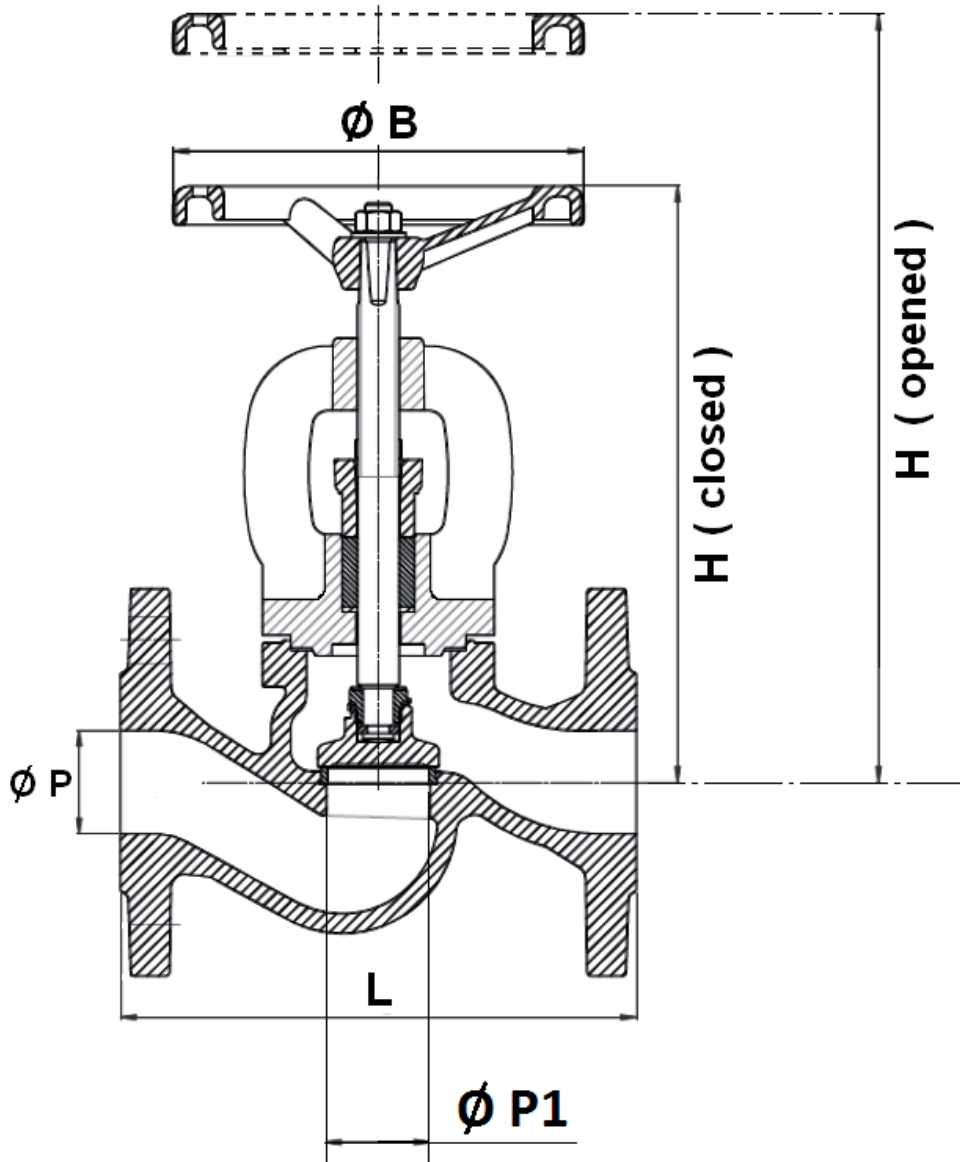


Item	Designation	Materials
1	Body	Cast iron EN GJL-250
2	Seat	SS 410 (1.4006)
3	Disc	SS 420 (1.4021)
4	Bonnet gasket	Graphite + NiCr
5	Gland packing	Graphite
6	Stem	SS 420 (1.4021)
7	Bonnet	Cast iron EN GJL-250
8	Handwheel	Cast iron EN GJS-500-7
9	Handwheel nut	Galvanized steel
10	Washer	Galvanized steel
11*	Disc screw	SS 420 (1.4021)
12*	Disc washer	SS 321 (1.4541)
13*	Ring	SS 420 (1.4021)
14	Hexagon bolt	8.8
15	T bolt	Galvanized steel 5.8
16	Gland	Cast iron EN GJL-250
17	Gland nut	Galvanized steel

* : only for DN 65 to 200

CAST IRON GLOBE VALVE HIGH TEMPERATURE FLANGED PN16 DIN 3202-1 F1

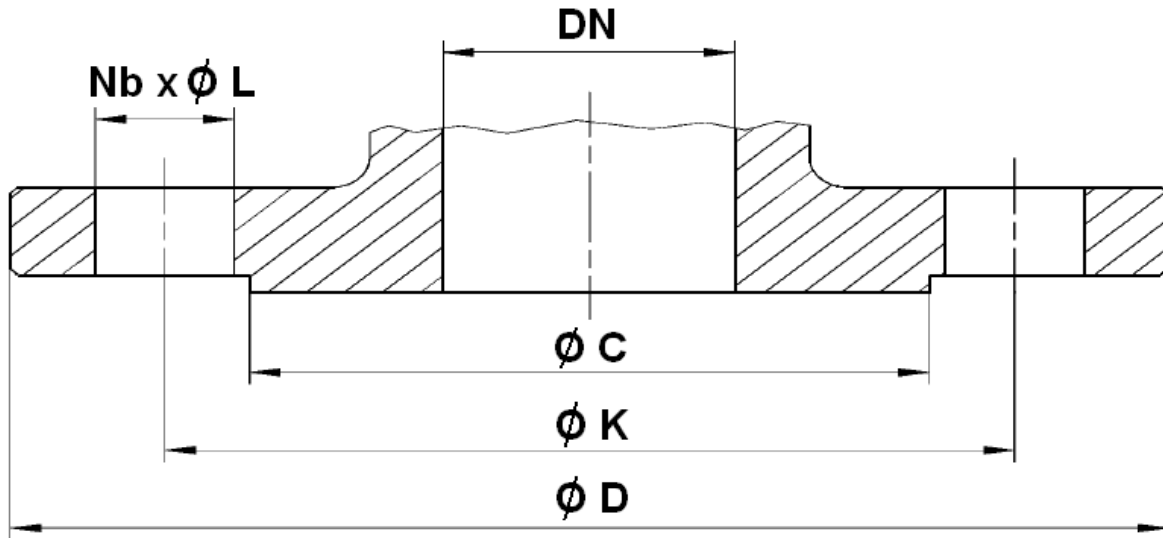
SIZE (in mm) :



DN	15	20	25	32	40	50	65	80	100	125	150	200
Ø P	15	20	25	32	40	50	65	80	100	125	150	200
Ø P1	17	20	25	32	39	50	65	80	100	125	150	200
L	130	150	160	180	200	230	290	310	350	400	480	600
H (opened)	193	194	203	212	263	273	305	344	378	420	483	606
H (closed)	178	180	188	191	235	238	270	297	344	375	429	525
Ø B	100	100	120	120	160	160	180	200	250	250	320	360
Weight (Kg)	3.3	3.9	5	6.6	9.5	12	17.3	22.7	35.8	52.8	72.5	126
Ref.	479015	479020	479025	479032	479040	479050	479065	479080	479100	479125	479150	479200

CAST IRON GLOBE VALVE HIGH TEMPERATURE FLANGED PN16 DIN 3202-1 F1

FLANGES SIZE (in mm) :



DN	15	20	25	32	40	50	65	80	100	125	150	200
Ø C	46	56	65	76	84	99	118	132	156	184	211	266
Ø D	95	105	115	140	150	165	185	200	220	250	285	340
Ø K	65	75	85	100	110	125	145	160	180	210	240	295
Nb x Ø L	4 x 14	4 x 14	4 x 14	4 x 19	4 x 19	4 x 19	4 x 19	8 x 19	8 x 19	8 x 19	8 x 23	12 x 23

CAST IRON GLOBE VALVE HIGH TEMPERATURE FLANGED PN16 DIN 3202-1 F1

STANDARDS :

- Manufacturer certified ISO 9001 :2015 and ISO 14001 : 2015
- DIRECTIVE 2014/68/EU : CE N° 0062
Risk Category III module H
- Certificate 3.1 on request
- Tests according to EN 12266-1, rate A
- Length according to EN 558 series 1 (DIN 3202-1 F1)
- Flanges R.F. according to EN 1092-2 PN16
- Approval certificate Polish **PZH**
- Russian certification TRCU (marking and declaration EAC on request)